



Lüthi

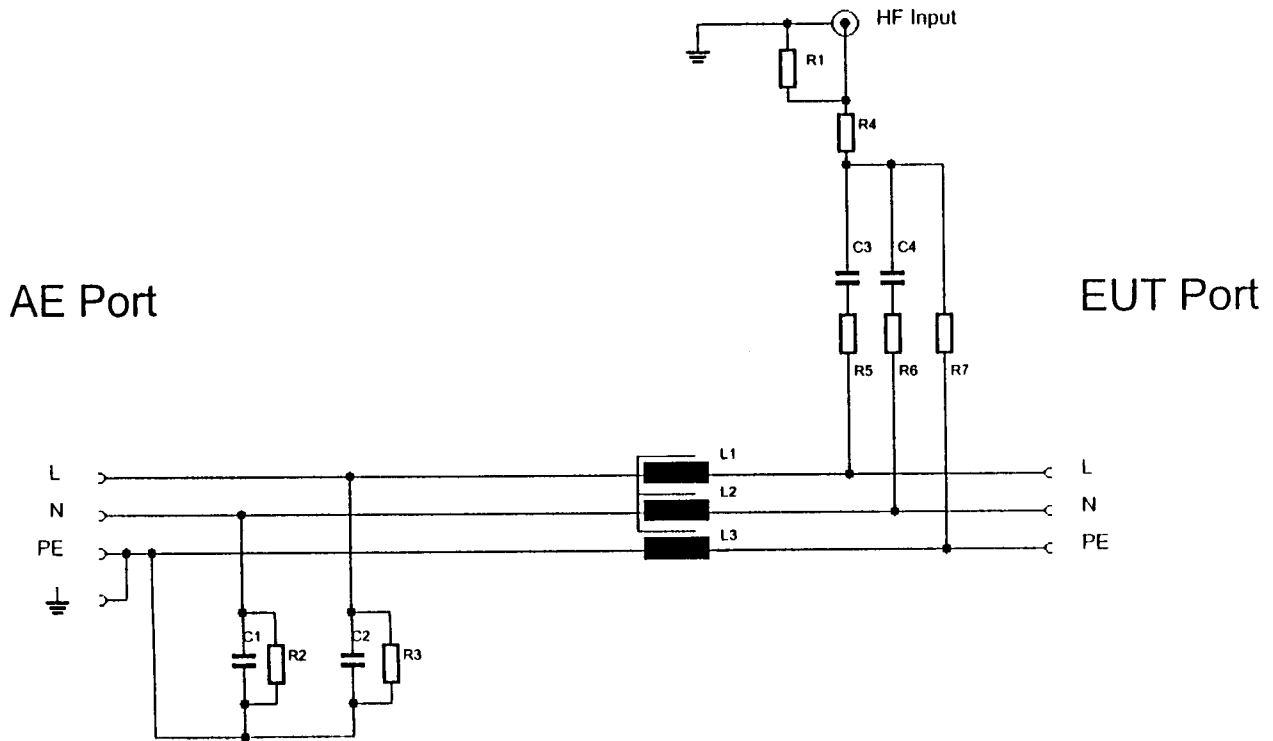
**Elektronik –
Feinmechanik**



Coupling-Decoupling Network C D N L-801 M 3

IEC 61000-4-6

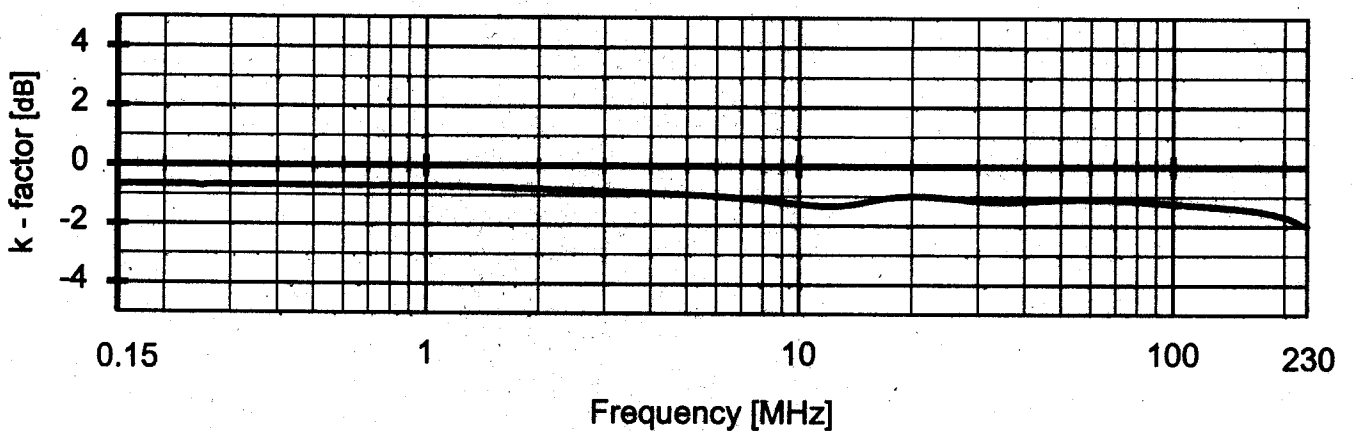
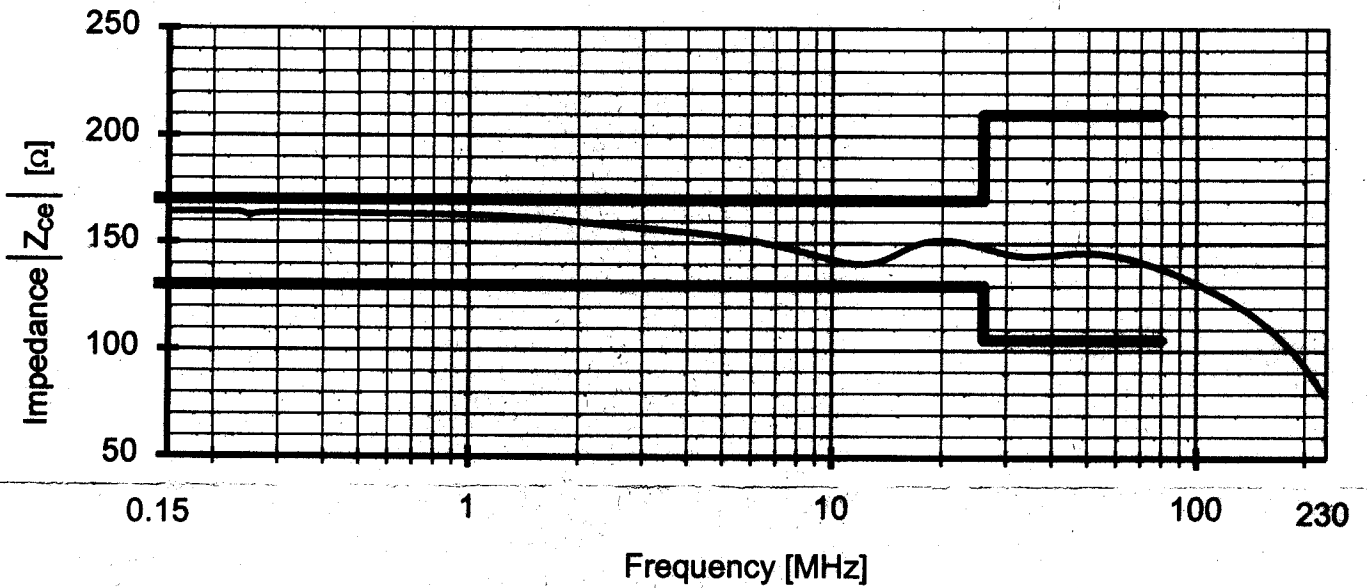
AE Port	IEC320/C14
EUT Port	4mm Banana
Leads	L+N+PE
Mains	240 V
Max. Current	16 A
IN Port	BNC 50 Ohm
Frequency range	0,15 ... 230 MHz
HF Power Dissipation	6 Watt



**CDN Impedance and K-factor
in the frequency range 150 kHz - 230 MHz
in a test setup according to IEC 61000-4-6**

Lüthi Elektronik-Feinmechanik AG
CH 4402 Frenkendorf

CDN L801-M3
Ser. Nr.: 2106



Equipment used:

Network Analyzer Typ ZVR
50 Ω to 150 Ω Adaptor
50 Ω to 150 Ω Adaptor

Inv. Nr. 4110
Inv. Nr. 4159
Inv. Nr. 4160

Location:

Measurement Impedance
Reference for K-factor

EB15

Date and time:
2005.02.07 14:21
2005.02.07 14:17