

**Standard Hornantenne HA 9252-4067**  
**Standard Horn Antenna HA 9252-4067**

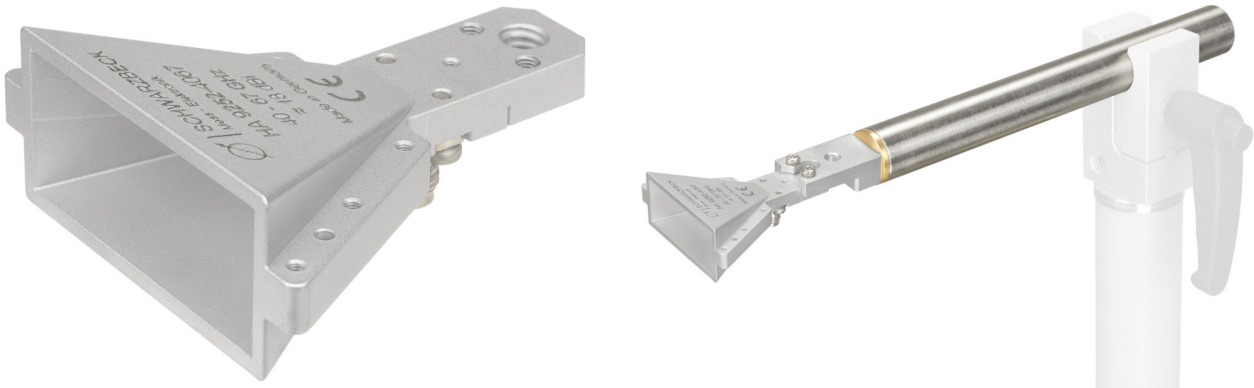


Fig. 1: HA 9252-4067 (left) with 22 mm tube 1/4 (right)

**Beschreibung:**

Linear polarisierte Standard Pyramidenhornantenne mit Koaxialanschluß 1.85 mm.

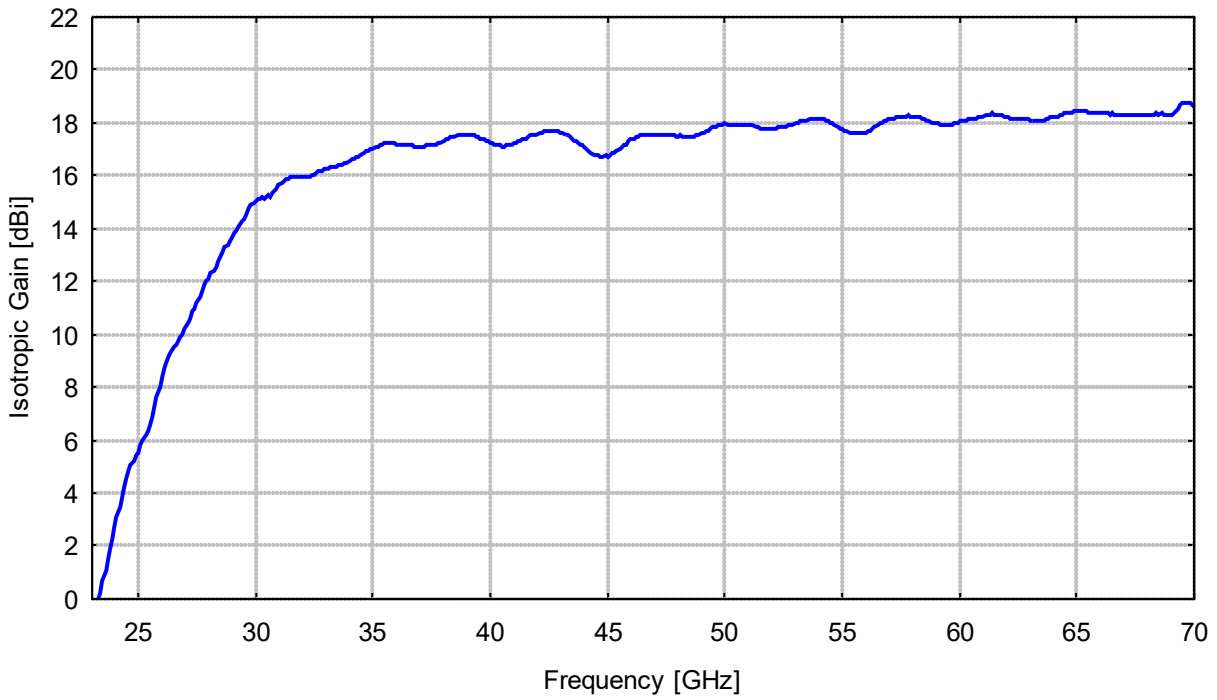
**Description:**

Linear polarized standard gain horn antenna with coaxial connector 1.85 mm.

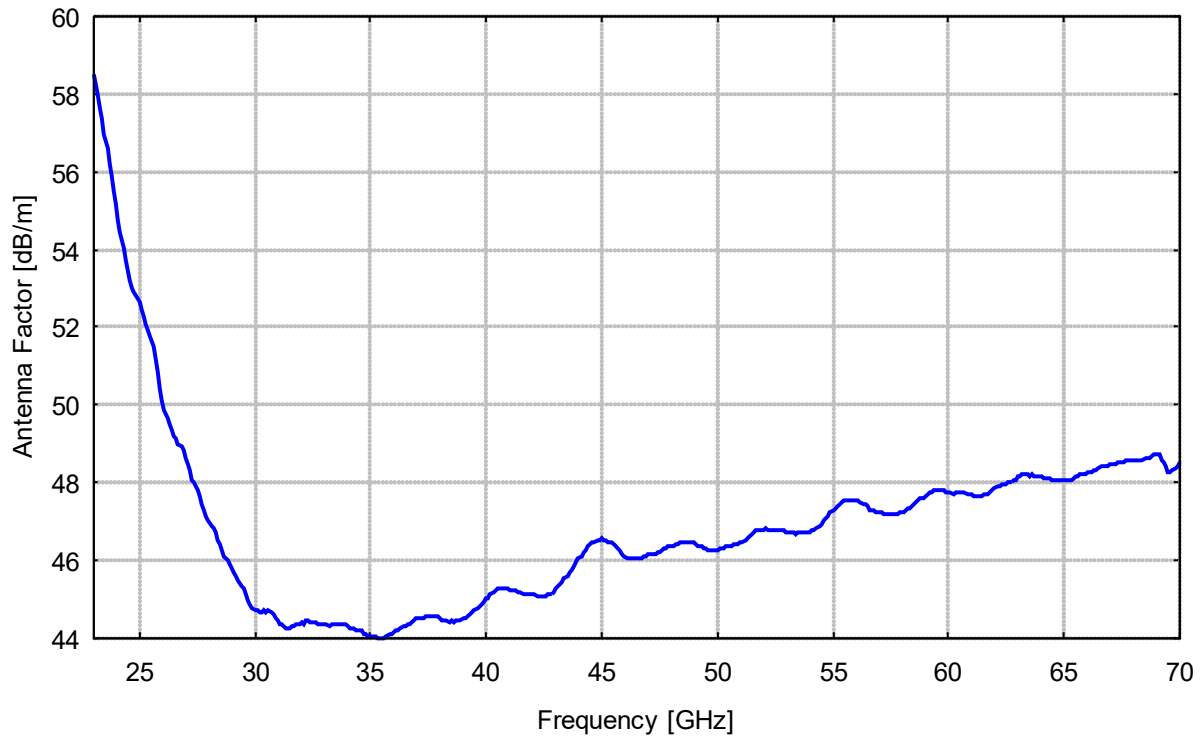
<b>Technische Daten:</b>		<b>Specifications:</b>
Frequenzbereich (nominell):	40 - 67 GHz	Frequency range (nominal):
Frequenzbereich (nutzbar):	30...75 GHz	Frequency range (useable):
Gewinn:	typ. 15-18.5 dBi	Gain:
Antennen-Wandlungsmaß:	typ. 44..49 dB/m	Antenna factor:
Stehwellenverhältnis:	typ. < 1.5	VSWR:
3 dB Halbwertsbreite E-Ebene:	20° @ 40 GHz 16° @ 55 GHz 14° @ 67 GHz	Half power beamwidth (E-Plane):
3 dB Halbwertsbreite H-Ebene:	24° @ 40 GHz 26° @ 55 GHz 26° @ 67 GHz	Half power beamwidth (H-Plane):
Koaxialanschluss:	1.85 mm female	Coaxial connector:
Max. Eingangsleistung:	10 W	Max. input power:
Befestigungsgewinde:	1/4", 2 x M3	Mounting threads:
Abmessungen:	61 x 56 x 24 mm	Dimensions:
Gewicht:	30 g	Weight:
Material:	Aluminium	Material:
Zubehör (optional):	22 mm tube 1/4 Adapter AD 9712 CCA 9252-4067	Accessories (optional):



Isotropgewinn



Antennen-Wandlungsmaß



Frequency	Isotropic gain	Antenna factor.
MHz	dBi	dB/m
30000.00	15.06	44.70
30100.00	15.09	44.70
30200.00	15.15	44.67
30300.00	15.17	44.68
30400.00	15.14	44.74
30500.00	15.23	44.68
30600.00	15.22	44.72
30700.00	15.33	44.64
30800.00	15.39	44.60
30900.00	15.49	44.53
31000.00	15.61	44.44
31100.00	15.70	44.38
31200.00	15.76	44.34
31300.00	15.86	44.27
31400.00	15.90	44.26
31500.00	15.91	44.27
31600.00	15.91	44.30
31700.00	15.93	44.32
31800.00	15.92	44.35
31900.00	15.94	44.35
32000.00	15.91	44.42
32100.00	15.98	44.37
32200.00	15.94	44.44
32300.00	15.97	44.44
32400.00	16.01	44.42
32500.00	16.04	44.42
32600.00	16.10	44.39
32700.00	16.14	44.37
32800.00	16.20	44.34
32900.00	16.23	44.33
33000.00	16.26	44.33
33100.00	16.27	44.35
33200.00	16.32	44.32
33300.00	16.31	44.36
33400.00	16.35	44.35
33500.00	16.38	44.34
33600.00	16.38	44.37
33700.00	16.43	44.34
33800.00	16.46	44.34
33900.00	16.48	44.34
34000.00	16.54	44.31
34100.00	16.60	44.27
34200.00	16.63	44.27
34300.00	16.68	44.25
34400.00	16.73	44.22
34500.00	16.80	44.18
34600.00	16.82	44.18
34700.00	16.91	44.12
34800.00	16.96	44.09
34900.00	17.01	44.06
35000.00	17.04	44.06

Frequency	Isotropic gain	Antenna factor.
MHz	dBi	dB/m
35100.00	17.09	44.04
35200.00	17.10	44.05
35300.00	17.17	44.00
35400.00	17.18	44.02
35500.00	17.21	44.01
35600.00	17.24	44.01
35700.00	17.23	44.05
35800.00	17.20	44.10
35900.00	17.21	44.11
36000.00	17.18	44.17
36100.00	17.19	44.18
36200.00	17.18	44.21
36300.00	17.17	44.25
36400.00	17.16	44.28
36500.00	17.16	44.31
36600.00	17.13	44.36
36700.00	17.14	44.38
36800.00	17.11	44.42
36900.00	17.09	44.47
37000.00	17.08	44.50
37100.00	17.08	44.53
37200.00	17.10	44.53
37300.00	17.12	44.53
37400.00	17.14	44.54
37500.00	17.14	44.56
37600.00	17.16	44.56
37700.00	17.18	44.56
37800.00	17.23	44.54
37900.00	17.25	44.54
38000.00	17.32	44.50
38100.00	17.35	44.48
38200.00	17.40	44.46
38300.00	17.44	44.45
38400.00	17.49	44.42
38500.00	17.49	44.44
38600.00	17.52	44.43
38700.00	17.53	44.44
38800.00	17.54	44.46
38900.00	17.55	44.47
39000.00	17.56	44.49
39100.00	17.55	44.51
39200.00	17.54	44.54
39300.00	17.51	44.59
39400.00	17.47	44.66
39500.00	17.44	44.71
39600.00	17.39	44.78
39700.00	17.37	44.83
39800.00	17.33	44.88
39900.00	17.31	44.93
40000.00	17.26	45.00
40100.00	17.24	45.04

Frequency	Isotropic gain	Antenna factor.
MHz	dBi	dB/m
40200.00	17.18	45.12
40300.00	17.16	45.17
40400.00	17.12	45.23
40500.00	17.11	45.26
40600.00	17.11	45.28
40700.00	17.13	45.29
40800.00	17.15	45.28
40900.00	17.18	45.28
41000.00	17.22	45.25
41100.00	17.25	45.25
41200.00	17.29	45.22
41300.00	17.33	45.21
41400.00	17.38	45.18
41500.00	17.41	45.17
41600.00	17.46	45.15
41700.00	17.50	45.13
41800.00	17.52	45.13
41900.00	17.55	45.11
42000.00	17.57	45.11
42100.00	17.60	45.11
42200.00	17.63	45.10
42300.00	17.67	45.08
42400.00	17.68	45.09
42500.00	17.72	45.07
42600.00	17.72	45.08
42700.00	17.72	45.11
42800.00	17.70	45.15
42900.00	17.67	45.20
43000.00	17.63	45.26
43100.00	17.60	45.31
43200.00	17.56	45.37
43300.00	17.52	45.43
43400.00	17.45	45.52
43500.00	17.41	45.58
43600.00	17.32	45.69
43700.00	17.27	45.76
43800.00	17.18	45.87
43900.00	17.13	45.94
44000.00	17.05	46.04
44100.00	16.99	46.12
44200.00	16.90	46.23
44300.00	16.87	46.28
44400.00	16.79	46.38
44500.00	16.78	46.41
44600.00	16.74	46.46
44700.00	16.73	46.49
44800.00	16.70	46.54
44900.00	16.74	46.53
45000.00	16.73	46.55
45100.00	16.78	46.52
45200.00	16.82	46.51
45300.00	16.88	46.46

Frequency	Isotropic gain	Antenna factor.
MHz	dBi	dB/m
45400.00	16.92	46.44
45500.00	16.99	46.39
45600.00	17.05	46.35
45700.00	17.13	46.29
45800.00	17.19	46.25
45900.00	17.29	46.16
46000.00	17.35	46.12
46100.00	17.42	46.07
46200.00	17.46	46.05
46300.00	17.49	46.04
46400.00	17.51	46.05
46500.00	17.52	46.05
46600.00	17.51	46.07
46700.00	17.54	46.07
46800.00	17.53	46.10
46900.00	17.52	46.12
47000.00	17.53	46.13
47100.00	17.54	46.14
47200.00	17.54	46.16
47300.00	17.57	46.15
47400.00	17.54	46.20
47500.00	17.54	46.21
47600.00	17.53	46.24
47700.00	17.50	46.29
47800.00	17.50	46.31
47900.00	17.49	46.34
48000.00	17.49	46.35
48100.00	17.50	46.37
48200.00	17.49	46.39
48300.00	17.48	46.42
48400.00	17.47	46.45
48500.00	17.46	46.48
48600.00	17.47	46.48
48700.00	17.48	46.49
48800.00	17.51	46.48
48900.00	17.56	46.45
49000.00	17.59	46.44
49100.00	17.64	46.41
49200.00	17.70	46.36
49300.00	17.72	46.36
49400.00	17.79	46.30
49500.00	17.82	46.30
49600.00	17.86	46.27
49700.00	17.89	46.26
49800.00	17.93	46.24
49900.00	17.92	46.26
50000.00	17.95	46.25
50100.00	17.92	46.30
50200.00	17.93	46.31
50300.00	17.93	46.32
50400.00	17.93	46.34
50500.00	17.91	46.37

Frequency	Isotropic gain	Antenna factor.
MHz	dBi	dB/m
50600.00	17.94	46.36
50700.00	17.93	46.39
50800.00	17.94	46.40
50900.00	17.93	46.42
51000.00	17.92	46.45
51100.00	17.90	46.49
51200.00	17.88	46.53
51300.00	17.83	46.59
51400.00	17.82	46.62
51500.00	17.79	46.67
51600.00	17.77	46.70
51700.00	17.74	46.75
51800.00	17.75	46.76
51900.00	17.73	46.79
52000.00	17.75	46.79
52100.00	17.75	46.80
52200.00	17.79	46.78
52300.00	17.80	46.79
52400.00	17.82	46.78
52500.00	17.84	46.79
52600.00	17.86	46.78
52700.00	17.88	46.78
52800.00	17.90	46.77
52900.00	17.92	46.76
53000.00	17.97	46.73
53100.00	18.00	46.73
53200.00	18.03	46.71
53300.00	18.05	46.71
53400.00	18.09	46.68
53500.00	18.07	46.71
53600.00	18.11	46.70
53700.00	18.11	46.71
53800.00	18.14	46.70
53900.00	18.14	46.71
54000.00	18.15	46.72
54100.00	18.12	46.76
54200.00	18.12	46.78
54300.00	18.08	46.83
54400.00	18.04	46.89
54500.00	18.01	46.94
54600.00	17.96	47.01
54700.00	17.91	47.07
54800.00	17.87	47.13
54900.00	17.79	47.22
55000.00	17.76	47.27
55100.00	17.71	47.34
55200.00	17.67	47.39
55300.00	17.63	47.44
55400.00	17.62	47.47
55500.00	17.59	47.52
55600.00	17.58	47.54
55700.00	17.60	47.54

Frequency	Isotropic gain	Antenna factor.
MHz	dBi	dB/m
55800.00	17.60	47.55
55900.00	17.62	47.55
56000.00	17.64	47.54
56100.00	17.67	47.53
56200.00	17.70	47.51
56300.00	17.77	47.46
56400.00	17.83	47.42
56500.00	17.89	47.37
56600.00	17.96	47.31
56700.00	18.00	47.29
56800.00	18.04	47.27
56900.00	18.07	47.25
57000.00	18.11	47.23
57100.00	18.13	47.22
57200.00	18.17	47.20
57300.00	18.19	47.19
57400.00	18.21	47.19
57500.00	18.23	47.18
57600.00	18.24	47.19
57700.00	18.24	47.20
57800.00	18.26	47.20
57900.00	18.25	47.22
58000.00	18.23	47.26
58100.00	18.24	47.26
58200.00	18.20	47.32
58300.00	18.18	47.36
58400.00	18.17	47.38
58500.00	18.12	47.44
58600.00	18.10	47.48
58700.00	18.08	47.52
58800.00	18.02	47.58
58900.00	18.00	47.62
59000.00	17.98	47.66
59100.00	17.95	47.70
59200.00	17.92	47.75
59300.00	17.93	47.75
59400.00	17.89	47.80
59500.00	17.91	47.80
59600.00	17.91	47.81
59700.00	17.93	47.81
59800.00	17.96	47.79
59900.00	18.00	47.77
60000.00	18.04	47.74
60100.00	18.05	47.74
60200.00	18.09	47.72
60300.00	18.10	47.73
60400.00	18.11	47.73
60500.00	18.12	47.73
60600.00	18.14	47.73
60700.00	18.15	47.73
60800.00	18.18	47.72
60900.00	18.21	47.71

Frequency	Isotropic gain	Antenna factor.
MHz	dBi	dB/m
61000.00	18.23	47.69
61100.00	18.28	47.66
61200.00	18.31	47.65
61300.00	18.31	47.66
61400.00	18.33	47.65
61500.00	18.31	47.69
61600.00	18.30	47.71
61700.00	18.30	47.72
61800.00	18.28	47.76
61900.00	18.25	47.81
62000.00	18.24	47.83
62100.00	18.20	47.89
62200.00	18.16	47.93
62300.00	18.17	47.94
62400.00	18.16	47.96
62500.00	18.16	47.98
62600.00	18.15	48.00
62700.00	18.14	48.03
62800.00	18.11	48.07
62900.00	18.11	48.08
63000.00	18.06	48.15
63100.00	18.06	48.16
63200.00	18.03	48.21
63300.00	18.03	48.22
63400.00	18.03	48.23
63500.00	18.09	48.18
63600.00	18.10	48.19
63700.00	18.15	48.16
63800.00	18.17	48.15
63900.00	18.19	48.14
64000.00	18.19	48.15
64100.00	18.23	48.13
64200.00	18.25	48.12
64300.00	18.27	48.11
64400.00	18.31	48.09
64500.00	18.34	48.07
64600.00	18.35	48.08
64700.00	18.39	48.05
64800.00	18.40	48.05
64900.00	18.41	48.06
65000.00	18.44	48.04
65100.00	18.44	48.05
65200.00	18.43	48.08
65300.00	18.46	48.06
65400.00	18.43	48.10
65500.00	18.40	48.14
65600.00	18.40	48.16

Frequency	Isotropic gain	Antenna factor.
MHz	dBi	dB/m
65700.00	18.38	48.19
65800.00	18.37	48.21
65900.00	18.38	48.21
66000.00	18.37	48.24
66100.00	18.37	48.25
66200.00	18.37	48.27
66300.00	18.34	48.31
66400.00	18.32	48.34
66500.00	18.33	48.35
66600.00	18.29	48.40
66700.00	18.29	48.41
66800.00	18.29	48.42
66900.00	18.29	48.44
67000.00	18.29	48.45
67100.00	18.29	48.47
67200.00	18.28	48.48
67300.00	18.27	48.51
67400.00	18.28	48.51
67500.00	18.27	48.53
67600.00	18.28	48.54
67700.00	18.27	48.56
67800.00	18.27	48.58
67900.00	18.27	48.59
68000.00	18.28	48.59
68100.00	18.29	48.59
68200.00	18.30	48.59
68300.00	18.32	48.59
68400.00	18.33	48.59
68500.00	18.31	48.62
68600.00	18.33	48.62
68700.00	18.31	48.65
68800.00	18.27	48.70
68900.00	18.28	48.71
69000.00	18.26	48.74
69100.00	18.28	48.73
69200.00	18.42	48.60
69300.00	18.53	48.50
69400.00	18.64	48.41
69500.00	18.78	48.28
69600.00	18.78	48.29
69700.00	18.78	48.30
69800.00	18.73	48.36
69900.00	18.70	48.41
70000.00	18.59	48.53

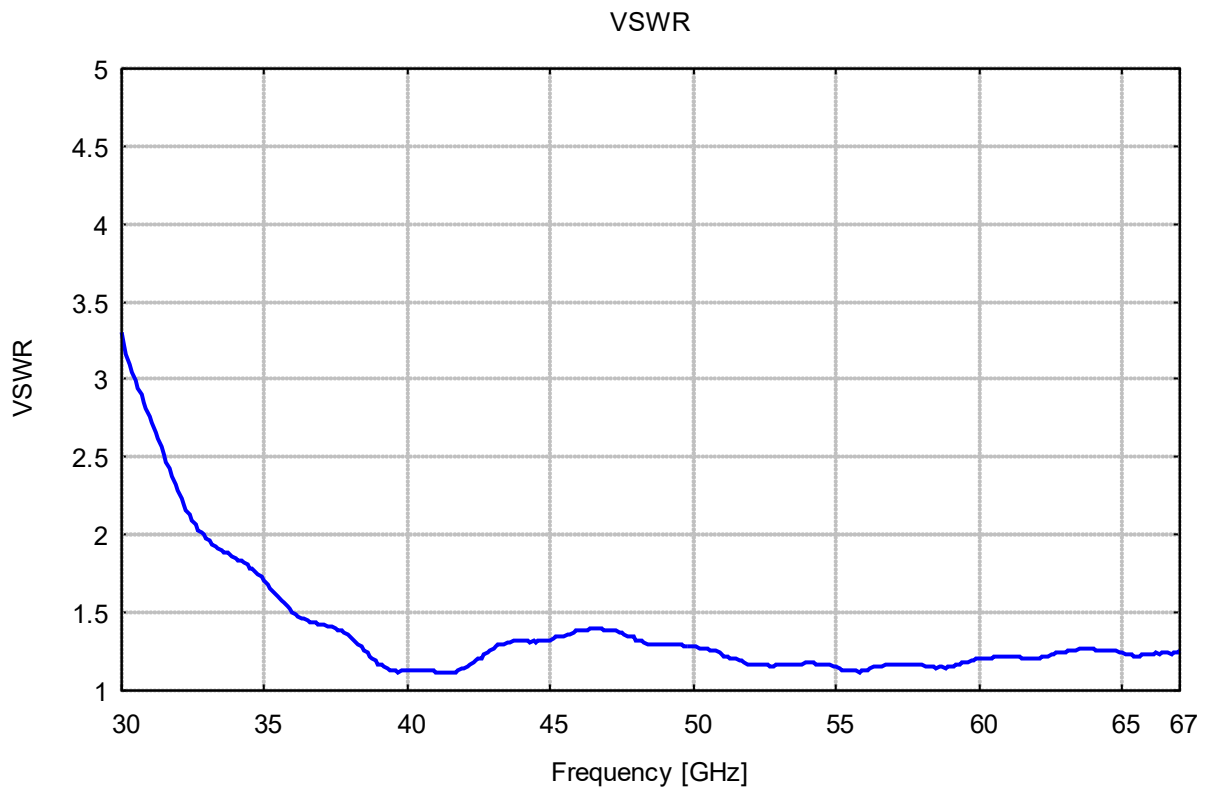


Fig. 2: HA 9252-4067 in CCA 9252-4067 with 22 mm tube  $\frac{1}{4}$  and Adapter AD 9712